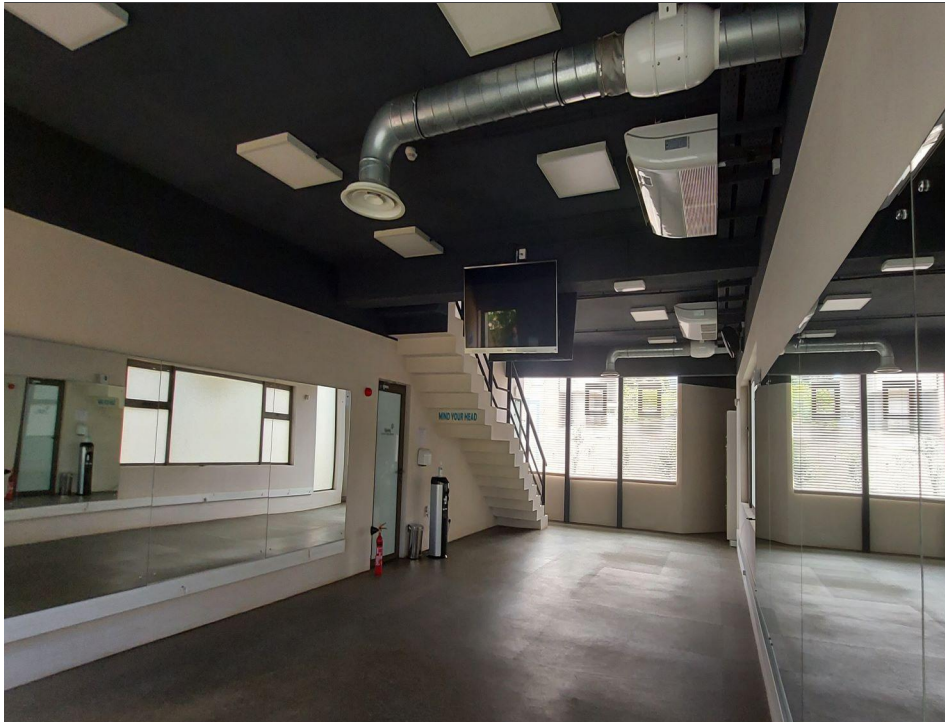


The perfect fit

MUR 22,500,000

Beds: 0 | **Baths: 0** | **Interior: 600 m²** | **Exterior: 752 m²**



Listing type: For Sale Built

| Property type: House

Locality: Coromandel

| Region: Centre

| Property ID: RS1340

Description

Constructed in 2019 in the heart of Coromandel, this commercial/office building benefits from a nice location. It was designed with a unique touch, being well equipped with modern infrastructures.

Inside, the 2-storey property of 600m² is very spacious and can be converted into a call center, a medical consultation office, a logistics company, and so much more. Well equipped with sensor doors, you will have air conditioning throughout the building, carbon dioxide detectors and vents, a sound system throughout the building, screens, and TVs for prompt communications and intercoms.

The building has 7 toilets and 3 shower rooms with sensor taps and hand dryers. It is accessible easily and has a nice garden, with a cafeteria infrastructure already in place.

12 parking spaces are available in front of the building.

Contact us for a visit.

...

[VIEW ON SIR.MU](#)



Nazly Edoo
Real Estate Professional
info@sir.mu
+230 5729 9847